

Writer's Companion™ Network Installation

Important Facts:

- Writer's Companion™ must always be installed on the client.
- You MUST type in a different serial number for each client.
- Do NOT ghost Writer's Companion after you have typed in a serial number. You can, however, install Writer's Companion™ and then ghost it before you have typed in a serial number.
- You can use your current class and student folders to create the Writer's Companion™ menu by copying them into the wrtclass folder you create on the server.

Steps to Networking:

1. Install the program on each client with an individual serial number.
2. Populate the Login Menu with classes and students (Note: to do this you have to create or have class and student folders.
3. Point the program to the class and student folders on the network.

Step 1

Installing the Program:

1. Install Writer's Companion on the clients. Make sure you use a **separate serial number** for each computer. *Note: Ghosting: You can install Writer's Companion on the model client, but DO NOT type in the serial number. Then ghost the image to all your clients. Now you can type in the serial number on each computer.*

Step 2

Creating the Class and Student Menus for the Log-in

You can either follow the directions in the documentation on pages 15-17 or do it the lazy way by using your existing or creating your own class and student folders.

The Easy Way:

1. Create a new folder on your server called **wrtclass**. The best place to put it is the root directory of your server.
2. Now, either copy your existing class and student folders or create new ones inside the wrtclass folder.

Step 3

Setting the Location of the Save Folder

You now have to tell **each** client where the wrtclass folder is. To do this takes only a couple of steps.

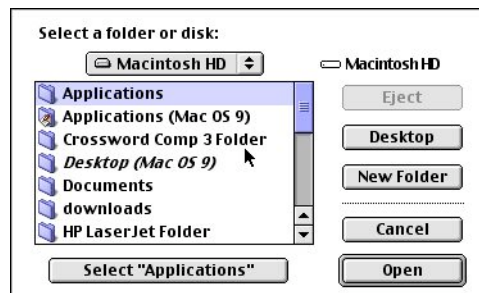
1. First, go to **Administrative Preferences** on the **File Menu**. When you click on this option the program will ask you for a password. The default password is “**goodwriter**”.



2. You will see a dialog with the option to **Set Location**.



3. Now, use the **Set Location** button to navigate to the folder above the **wrtclass** folder. If you did create the **wrtclass** folder in the root directory of your server, all you have to do here is type in or browse to the path to your server.



4. If you are using multiple stations, you will need to navigate to the folder or drive that you selected for the other station(s)., and click on the **Select** button. Since the class list is read from the **wrtclass** folder, every student can log on to any computer you have set up and will be able to login and get their work automatically.

Note for Windows network users: The computer you install Writer's Companion™ on must be mapped to the server to use network classroom folders.

